

BREX Builder for S1000D

Make sure your S1000D implementation is cost-effective and complies with the specification by addressing each and every decision point.

BREX Builder for S1000D utilizes industry best practices to streamline the business-rule creation process, ensuring the features of the specification are implemented correctly.

Accelerated S1000D project development

- Significantly reduce your project start-up costs
- Compress a 6-12 month project into 12 weeks or less by combining BREX Builder with RWS's S1000D Foundation Suite
- Increase accessibility and sharing of project information through a centrally hosted secure website
- Create a BREX data module with less time and money
- Speed up implementation with a business-friendly user interface that requires less XML technology-specific knowledge
- Save time and resources with only one tool to manage business rules (design documents and BREX data module) throughout the project lifecycle
- Reduce analysis and design issues by knowing what to use when and where
- Maximize your ROI by limiting your exposure to unknowns
- Take advantage of predefined enumeration lists to speed up the process

BREX Builder provides better outcomes, facilitates team collaboration and improves project quality by providing a central place for creating, organizing and hosting business rule design documents, BREX data module rule checks and enumeration lists.

Key features

- **Common Rules dialog configuration:** Reduce the number of business rules you need to answer
- **Author Business Rules dialog:** Easily create a textual answer for any business rule
- **Create BREX data modules:** Manage XML-rule checks quickly and easily
- **Go-to-Spec feature:** Navigate the S1000D specification for each decision point like a pro
- **Project Statistics dialog:** Instantly track and report on where you are in the analysis and design process
- **Template-driven dialogs:** Create Use or Do Not Use rule checks and enumeration lists
- **Automated website generation** of your business rules design document (BRDD)
- **Custom creation** of business rules
- **Generate BREX data modules** on demand

Make S1000D easy – provide your team with a powerful tool to address critical project decisions in a timely, cost-effective manner.



Compliance and efficiency

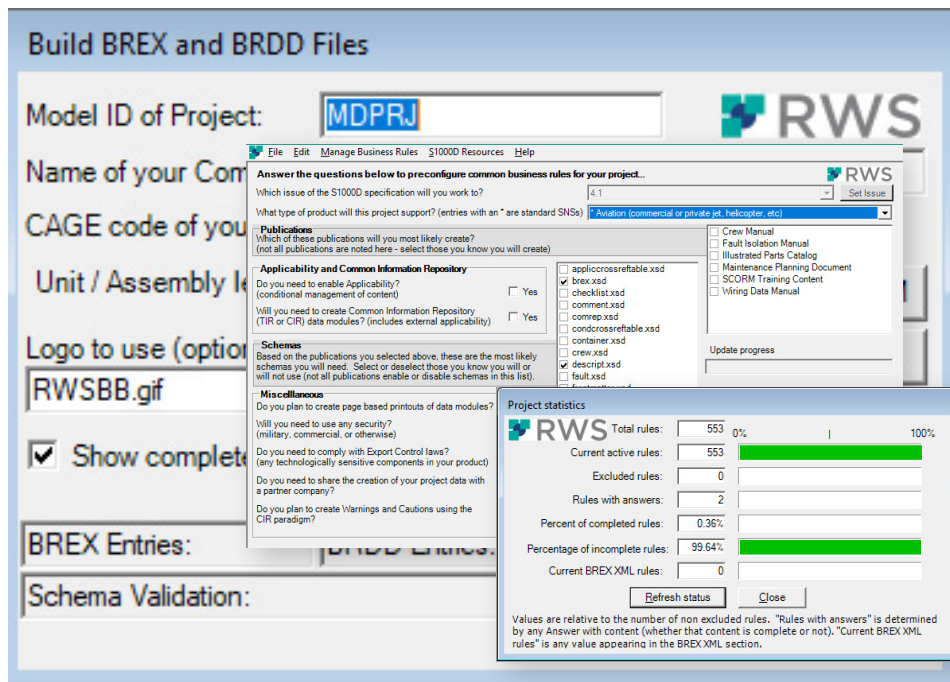
BREX Builder helps you measure and achieve your project milestones while you prove and raise your level of conformance to the S1000D specification. You'll also gain efficiencies that improve project quality and reduce costs to meet the business and operational demands of today's aerospace and defense programs.

BREX Builder delivers a new dimension of capability to any stage of a project by helping analysts, writers, editors, IT personnel and subject-matter experts collaborate on critical decision points using a centrally managed knowledge base, website or paper-based publication.

System requirements

Windows-based operating system. BREX Builder does not interact with the registry of the computer and is a fully self-contained application (it does not install any DLLs, libraries or plugins/add-ins). It installs with a minimum of effort and can be easily and completely removed from a system in a matter of seconds.

Using BREX Builder is like having an experienced S1000D consultant on staff. It provides recommendations based on real-world project experiences for specific business rules.



BREX Builder provides a user-friendly interface and a guided user experience.

Products and solutions for accelerating S1000D programs

S1000D Foundation Suite

The RWS S1000D project start-up solutions enable you to build the foundation for a technical data project based on the S1000D specification. The BREX Builder tool is used to guide you through the process of defining and documenting your business rules as defined in the S1000D specification. The project-foundational data components are defined and produced using the S1000D Foundation Suite too.

BREX Builder

BREX Builder helps you measure and achieve your project milestones while you prove and raise your level of conformance to the S1000D specification.

Enable for S1000D

Enable has everything you need to successfully launch even the most complex S1000D implementation. We provide the training, consultation and software products critical to developing and deploying an S1000D production environment.

Enable for S1000D contains three major deliverables:

- Expert S1000D training and project planning
- Installation of industry-leading software
- Best-practice process review and revisions

At the conclusion, your team has a complete, accurate application they have been training on and proven processes to support your business. Your team can now transition your application directly into production with a significantly higher confidence of success.

**Ready to try it yourself?
Get started with our 10-day
free trial of BREX Builder and
S1000D Foundation Suite:**

rws.com/s1000d-startup

Learn more about the complete set of Contenta solutions
rws.com/contenta

Or get in touch
askans1000dexpert@rws.com

About RWS

RWS Holdings plc is a unique, world-leading provider of technology-enabled language, content and intellectual property services. Through content transformation and multilingual data analysis, our combination of AI-enabled technology and human expertise helps our clients to grow by ensuring they are understood anywhere, in any language.

Our purpose is unlocking global understanding. By combining cultural understanding, client understanding and technical understanding, our services and technology assist our clients to acquire and retain customers, deliver engaging user experiences, maintain compliance and gain actionable insights into their data and content.

Over the past 20 years we've been evolving our own AI solutions as well as helping clients to explore, build and use multilingual AI applications. With 40+ AI-related patents and more than 100 peer-reviewed papers, we have the experience and expertise to support clients on their AI journey.

We work with over 80% of the world's top 100 brands, more than three-quarters of Fortune's 20 'Most Admired Companies' and almost all of the top pharmaceutical companies, investment banks, law firms and patent filers. Our client base spans Europe, Asia Pacific and North and South America. Our 65+ global locations across five continents service clients in the automotive, chemical, financial, legal, medical, pharmaceutical, technology and telecommunications sectors.

Founded in 1958, RWS is headquartered in the UK and publicly listed on AIM, the London Stock Exchange regulated market (RWS.L).

For further information, please visit: www.rws.com

© 2023 All rights reserved. Information contained herein is deemed confidential and the proprietary information of RWS Group*.

*RWS Group shall mean RWS Holdings plc for and on behalf of its affiliates and subsidiaries.